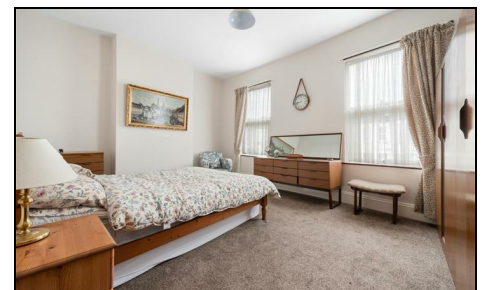


Haydons Road Wimbledon, SW19 8TZ

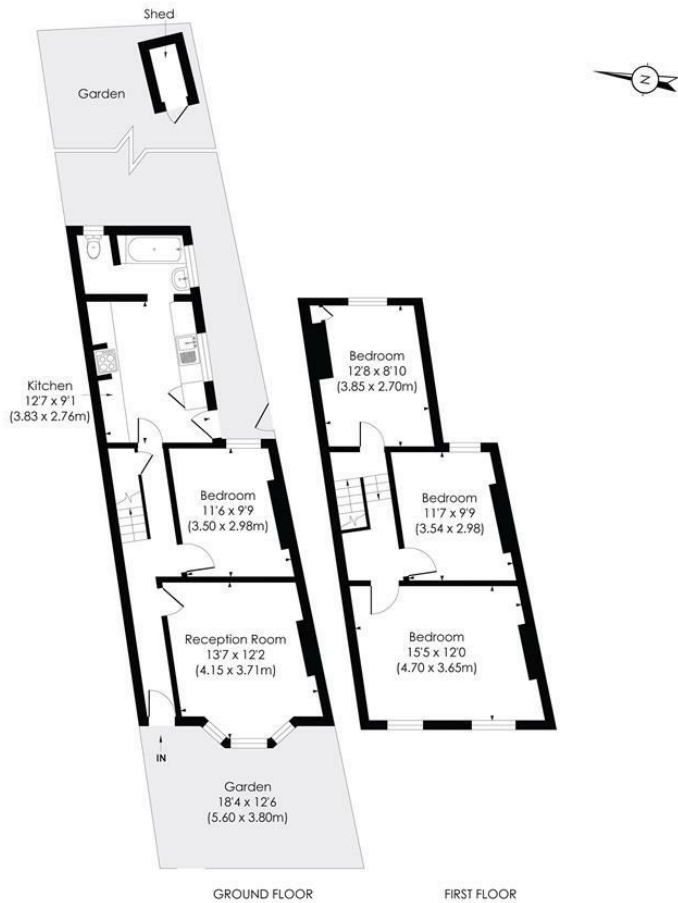
£725,000 Freehold



A desirable three bedroom Victorian end of terrace house with no onward chain, located in the ever popular Poets Area of Wimbledon. The house boasts a large lounge with separate dining room, spacious kitchen and bathroom to the ground floor. The first floor comprises of three bedrooms, including a principal bedroom with western facing aspect, second double bedroom and a third, large single bedroom. Arranged over two floors, there is also the fantastic potential to extend (STPP). Properties of this style and potential are a rare find so an early viewing is highly recommended.

HAYDONS ROAD, SW19

Approx. Gross Internal Floor Area
991 Sq. ft/92.04 Sq. m



© Pixangle Property Marketing Ltd. info@pixangle.com Tel: 0208 870 2118
 This floor plan has been prepared for the purpose of illustration only in accordance with the latest RICS code of measuring practice and is not to scale. All measurements and areas are approximate and whilst every effort has been made to ensure the accuracy of the plan contained here, no responsibility is taken for any error, omission or misstatement.

- Victorian House
- End Of Terrace
- Excellent Scope To Extend (STPP)
- Three Bedrooms
- Large East Facing Garden
- Two Reception Rooms
- NO ONWARD CHAIN
- EPC Rating D
- Council Tax Band D

Energy Efficiency Rating		Current	Potential
Very energy efficient - lower running costs			
(92-100) A			
(81-91) B			
(69-80) C			
(55-68) D		62	79
(39-54) E			
(21-38) F			
(1-20) G			
Not energy efficient - higher running costs			
England & Wales		EU Directive 2002/91/EC	

For Free Mortgage Quote and Best Mortgage Rates, call an Ellisons Mortgage Advisor on 020 8944 9494



Although these particulars are believed to be correct, their accuracy is not guaranteed and they do not form part of any contract.

Celebrating 30 years of successful Sales and Lettings in Merton

